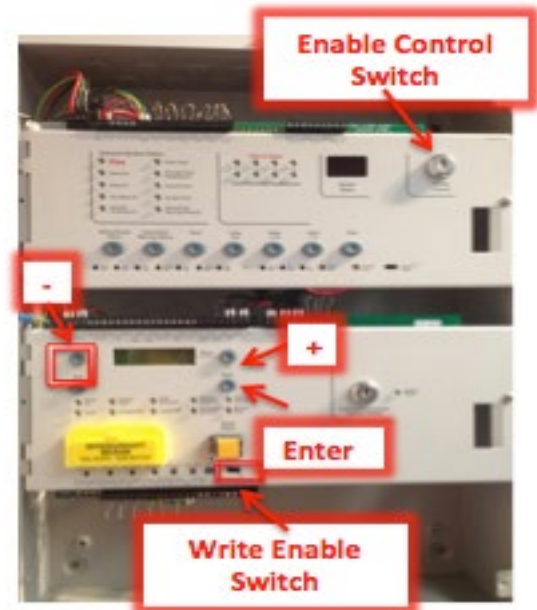


**Sigma-XT**  
**Step by Step**  
**Set Up**

Switch the “ENABLE CONTROL “003 KEYSWITCH “to the “Horizontal” position.

Gently switch the “WRITE ENABLE” switch on the below extinguishing module to the “LEFT”

\*\*\* To save the program move the “WRITE ENABLE” switch back to the “RIGHT” at any time during the following process\*\*\*

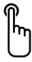
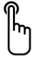
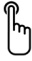
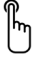


ALL OF THE FOLLOWING PROCESSES ARE CONDUCTED VIA THE EXTINGUISHING MODULES DISPLAY AND BUTTONS.

The “+” or “-“buttons are used to scroll backward & forth.

If warning signs & local control stations are connected via the RS485 comms (via the Status Serial +/- terminals) on the Gas control card, the panel will request that you acknowledge these individually by pushing the “ENTER” button to accept each one.

Press "ENTER" to access the menu

Screen Display	Instructions	
<b>LANGUAGE MODE</b>		
<b>LOCAL</b>	This is default and does not need to be changed	
<b>EXT O/P MODE</b>		
<b>COMMON MAIN / RESERVE</b>	Common is the default	To change – press "Enter" when it has the option you want press "Enter" again to confirm
 Press "+"		
<b>ACTIVATION MODE</b>		
<b>COINCIDENCE SINGLE</b>	Coincidence is the default	To change – press "Enter" when it has the option you want press "Enter" again to confirm
 Press "+"		
<b>USER O/P MODE</b>		
<b>STAGE 1 HOLD</b>	Stage 1 is the default	To change – press "Enter" when it has the option you want press "Enter" again to confirm
 Press "+"		
<b>FIRST ACTIVATION ZONE</b>		
<b>ZONE 1</b>	Zone 1 is the default	To Change – press "Enter" then "+" or "-" to scroll to the appropriate zone then press "Enter" to accept the changes
 Press "+"		

---

**Screen Display****Instructions****LAST ACTIVATION MODE****ZONE 2**

Zone 2 is default

To Change – press “Enter” then “+” or “-” to scroll to the appropriate zone then press “Enter” to accept the change

\*\*\*Note if “Coincidence has been selected in previous menu, any two (2) zones in the range will initiate the extinguishing system\*\*\*

\*\*\*Note if “Single” has been selected in previous menu any one (1) of zones in the range will initiate the extinguishing system\*\*\*



Press “+”

**RESET INHIBIT TIME**

0 is the default

**0**

To change – press “Enter” when it has the option you want press “Enter” again to confirm



Press “+”

**PRE RELEASE DELAY TIME**

30 seconds is the default

**30 sec**

To change – press “Enter” when it has the option you want press “Enter” again to confirm



Press “+”

**EXTINGUISHANT TIME RELEASE**

60 seconds is the default

**60 sec**

To change – press “Enter” when it has the option you want press “Enter” again to confirm

Press “+”

---

---

**Screen Display****Instructions****SECOND STAGE ALARM PULSING / CONTINUOUS PULSED**

Pulsed is the default

To change – press “Enter” when it has the option you want press “Enter” again to confirm

\*\*\*Note: Setting the option for STEADY ACTIV. ALARMS is not compliant with AS7240\*\*\*



Press “+”

**RELEASED INDICATION**

Released Input is the default

To change – press “Enter” when it has the option you want press “Enter” again to confirm

**RELEASED INPUT EXTING REL**

Press “+”

**DELAY ON MANUAL RELEASE**

Delay on is the default

To change – press “Enter” when it has the option you want press “Enter” again to confirm

**DELAY ON NO DELAY ON**

Press “+”

**RELEASE TIMER**

Enabled is the default

To change – press “Enter” when it has the option you want press “Enter” again to confirm

**Release Timer Enabled Release Timer Disabled**

Press “+”

**ROV REMOVED ON SYSTEM RESET**\*\*\*THIS SETTING SHOULD NOT BE CHANGED AND SHOULD NEVER BE SET\*\*\*

---



Press “+”

---

### Screen Display

### Instructions

## DISABLE EARTH FAULT MONITORING

**EARTH FAULT ENABLED**

Enabled is the default

**EARTH FAULT DISABLED**

To change – press “Enter” when it has the option you want press “Enter” again to confirm



Press “+”

## DISABLE FAULT OUTPUT

**FAULT OUTPUT ENABLED**

Fault output enabled is the default

**FAULT OUTPUT DISABLED**

To change – press “Enter” when it has the option you want press “Enter” again to confirm

\*\*\*Note: Disabling the fault output does not comply with the requirements of AS7240 \*\*\*



Press “+”

## INVERT LOW PRESSURE SWITCH INPUT

**NORMAL INVERTED**

Normal is the default

To change – press “Enter” when it has the option you want press “Enter” again to confirm



Press “+”

## EXTINGUISHANT OUTPUT MONITORING LEVELS

**EXTING O/P 1 = 206**

Default

To scan – press “Enter” when it has the option you want press “Enter” again to confirm



Press “+”

## EXTINGUISHING OUTPUT MONITORING LEVELS

**EXTING O/P 2 = 206**

Default

To scan – press “Enter” when it has the option you want press “Enter” again to confirm



Press “+”

---

CONGRATULATIONS! You have now successfully set up the Sigma XT, gently switch the “Write Enable” switch back to the right and the “Enable Keyswitch” to normal



## **Sydney**

Block Y, Unit 1, 391 Park Road, REGENTS PARK NSW 2143  
Mail: PO Box 508 GYMEA NSW 2227  
Phone: 1300 INCITE (1300 462 483) | 02 9644 7144  
Fax: 02 9644 7255  
Email: [sales@incitefire.com.au](mailto:sales@incitefire.com.au)  
Technical support: [support@incitefire.com.au](mailto:support@incitefire.com.au)

## **Melbourne**

Address: Unit 120, 45 Gilby Road, MT WAVERLEY VIC 3149  
Phone: 03 9544 2211  
Fax: 03 9544 2212  
Email: [salesvic@incitefire.com.au](mailto:salesvic@incitefire.com.au)

## **Brisbane**

Address: 25 Jeays Street, BOWEN HILLS QLD 4006  
Phone: 07 3252 5366  
Fax: 07 3252 4099  
Email: [salesqld@incitefire.com.au](mailto:salesqld@incitefire.com.au)

## **Perth**

Address: Unit 2, 48 Irvine Drive, MALAGA WA 6090  
Phone: 08 9349 2972  
Email: [saleswa@incitefire.com.au](mailto:saleswa@incitefire.com.au)